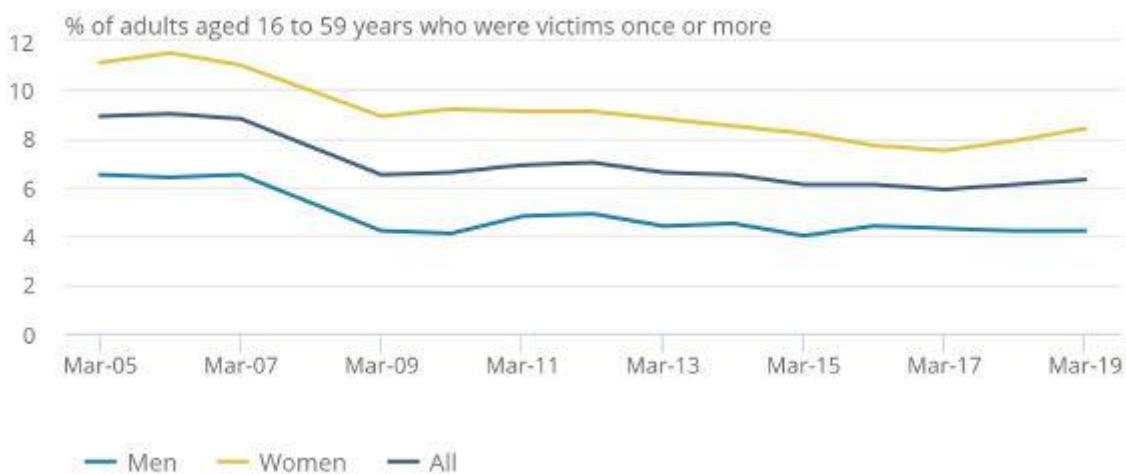


Male victims of domestic abuse and partner abuse 50 key facts

March 2020 - Produced by Mark Brooks, ManKind Initiative

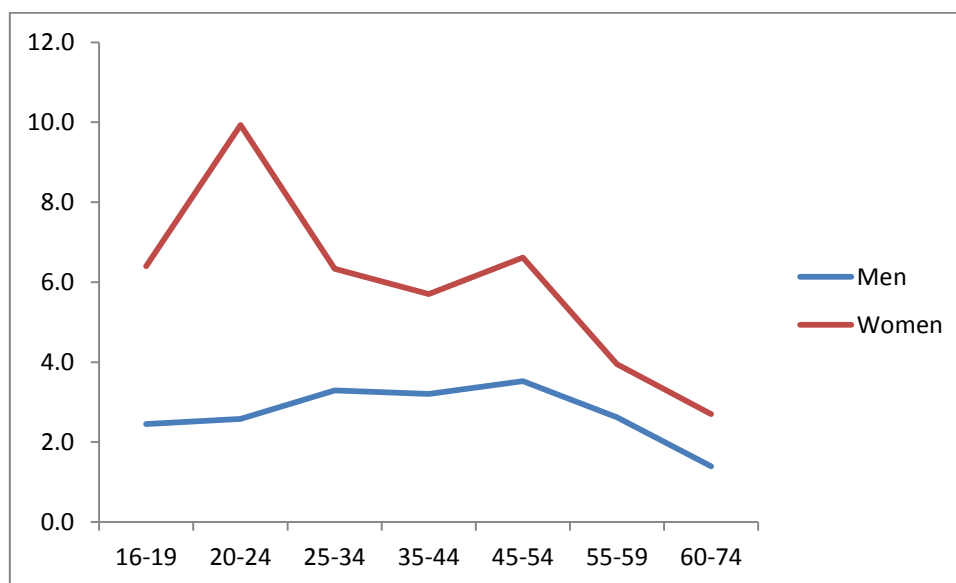
- (1) 13.6% of men and 28.4% of women and aged 16 to 74 have experienced some form of domestic abuse since the age of 16 (2017/18), equivalent to an estimated 2.9 million male victims and 6 million female. **For every three victims of domestic abuse, two will be female, one will be male.** One in four women and one in six to seven men suffer from domestic abuse in their lifetime.
- (2) 3.8% of men (786,000) and 7.5% of women (1.6 million) were victims of domestic abuse in 2018/19 equating to a ratio of two female victims to every one male victim. **For every three victims of domestic abuse, two will be female, one will be male.**

The difference between the prevalence of domestic abuse for men and women is at its lowest since the year ending March 2005. The 3.7 percentage point difference between men and women in the year ending March 2019 compares with a peak difference of 5.1 percentage points in the year ending March 2010.



- (3) In 2018/19, 9.2% of men (equivalent to 2.1 million men) and 21.6% of women (5.3 million women) said they had experienced partner abuse (non-sexual) since the age of 16. **For every three victims of domestic abuse, two will be female, one will be male.**
- (4) In 2018/19, 2.5% of men (equivalent to 516,000) and 4.8% of women (equivalent to 1 million) experienced partner abuse (non-sexual). **For every three victims of partner abuse, two will be female and one will be male.**

- (5) **There has been a significant fall in partner abuse for both men and women over the past 14 years for victims between 16 and 59.** The percentage of men stating they experienced partner abuse in 2004/05 was 4.6% (752,000) and in 2018/19, it was 2.5% (514,000). For women, the fall was from 8.6% (1.333 million) to 5.4% (1 million).
- (6) In 2018/19, domestic stalking by a partner/ex-partner was experienced by 0.6% (111,000) of men and 1.7% of women (279,000). Since the age of 16, the figures were 3.0% men (621,000) and 9.8% women (2.1 million). **For every four victims of stalking, three will be female and one will be male.** For male victims of stalking, 32% of the perpetrators have been current or ex partners (since the age of 16). For women 45% of the perpetrators have been current or ex partners.
- (7) In 2018/19, 1.0% of men and 1.3% of women were victims of force at the hands of their partner. **This is near parity.** Since the age of 16, the figures were 6.4% of men and 15.8% of women.
- (8) In 2018/19, since the age of 16, 0.5% of men (103,000) and 6.3% (1.5 million) of women had been sexually assaulted (including attempts) by a partner.
- (9) Whilst broadly speaking younger people are more likely to be a victim of partner abuse, there is a peak in the 45-54 age range for men and women. In 2018/19, 3.5% of men and 6.6% of women stated they were victims of partner abuse in that age range.



- (10) The percentage of gay men (3.2%) or bi-sexual men (3.3%) who suffered partner abuse in 2018/19 is more than for heterosexual men (2.8%). Lesbian women (7.6%) and bisexual women (9.1%) as a percentage also suffered far more partner abuse compared to heterosexual women (5.6%)
- (11) Men who are separated or divorced are more likely to suffer partner abuse than those who are married. 7.5% of divorced men (14% women) and 12.3% separated men (18.1% women) suffered partner abuse in 2018/19 while only 1.6% of married men (2.3% married women) did. For cohabiting men, the figures were 4.1% and 6.3% for women.

- (12) There is no clear distinct pattern regarding male victims and their occupation. For men in management, 2.8% said they suffered from partner abuse in 2018/19 (4.4% women) as did 2.7% of men (4.2% women) who had never worked/long-term unemployed and 1.4% students (8.3% women).
- (13) Men and women who are disabled are more likely to be a victim of partner abuse than those who are not disabled. 4.3% of men (10% women) with a long-term illness or disability were victims of partner abuse in 2018/19 compared to those with no long-term illness or disabilities, the figures are 2.5% (4.9% women).
- (14) The highest region for partner abuse in 2018/19 was the West Midlands for both men (4.2%) and women (6.4%).
- (15) 12% of men and 15% of women who were victims of partner abuse suffered three or more incidents in 14/15. 1% of men had suffered 50 or more incidents as had 2% of female victims.
- (16) Of those that suffered from partner abuse once or more in 17/18, 45.7% of male victims had suffered from force (28% of women), 2.9% of male victims had suffered from sexual assault (6.2% women) and 18.1% suffered from stalking (23.4% women).
- (17) In 2017/18, of those that suffered from partner abuse 32% men and 23% of women suffered a physical injury, 2.1% of men (3.4% women) suffered from severe bruising or bleeding, whilst more men (4.3%) suffered from internal injuries or broken bones/teeth (0.4% women).
- (18) In 2017/18, 41% of men who suffer partner abuse have emotional and mental problems (52% women).
- (19) In 17/18, 11% of male victims of partner abuse (7.2% women) had tried to take their own lives.

England and Wales	Adults aged 16 to 59		
	Men	Women	All
	Percentage		
Any physical injury	31.8	22.7	25.5
Minor bruising or black eye	19.4	17.3	18.0
Scratches	17.1	8.7	11.3
Severe bruising or bleeding from cuts	2.1	3.4	3.0
Internal injuries or broken bones/teeth	4.3	0.4	1.6
Any other physical injury (including poisoning)	1.1	4.0	3.1
Other effects	47.5	55.8	53.3
Mental or emotional problems	41.2	52.4	48.9
Stopped trusting people/difficulty in other relationships	20.8	26.1	24.5
Tried to kill self	11.0	7.2	8.4
Other effect (including becoming pregnant or contracting a disease)	0.5	1.0	0.9

(20) Of those seeking medical attention because of partner abuse in 17/18, 26.4% were male (73.6% female).

(21) Nearly half of male victims fail to tell anyone they are a victim of domestic abuse (only 51% tell anyone). They are nearly three times less likely to tell anyone than a female victim (49% of men tell no one as opposed to 19% women). This has worsened since 2015/16 where the figures were 61% for men (88% women).

What has changed is that men and women are less likely to tell someone they know personally (fall from 55% in 2014/15 for men to 44%). More men though are likely to tell the police (26.1% from 23%) whilst there has been a big fall in the numbers of women telling the police (33.4% now when in 14/15 it was 43%). It still means that though that only 1 in 6 men (15%) will tell the police they are a victim.

Only 10.7% of men will tell a health professional (20.8% women).

Who victim had told personally about the partner abuse experienced in the last 12 months, by sex, year ending March 2018 (figures in brackets are 2014/15)

England and Wales	Adults aged 16 to 59		
	Men	Women	All
	Percentage		
Told anyone	50.8 (61)	81.3 (88%)	72.4 (81)
Told someone known personally	43.7 (55)	73.5 (80)	64.8 (73)
Family or a relative	25.3 (44)	46.2 (59)	40.1 (55)
Friend or a neighbour	31.6 (28)	53.3 (43)	47.0 (39)
Work colleague	13.6 (17)	11.0 (17)	11.8 (17)
Told someone in an official position	26.1 (23)	33.4 (43)	31.2 (37)
Police	14.7 (10)	18.4 (26)	17.3 (21)
Health professionals	10.7 (11)	20.8 (23)	17.7 (19)
Lawyer, solicitor or other legal professional	5.5 (4)	6.9 (6)	6.5 (5)
Local council department	6.6(0)	4.7 (1)	5.3 (1)
Other government agency	0.6 (6%)	1.8 (9)	1.5 (8)
Told other support professional or organisation	24.1 (14)	34.2 (32)	31.1 (27)
Counsellor or therapist	19.6 (11)	24.2 (22)	22.8 (19)
Victim support	2.5 (3)	10.8 (7)	8.3 (6)
Helpline	4.7 (2)	5.9 (4)	5.5 (3)
Specialist support service	1.2 (1)	7.3 (6)	5.5 (4)
Told somebody else or another organisation	3.2 (5)	5.1 (5)	4.5 (5)

(22) The number of women convicted of perpetrating domestic abuse has increased seven fold since 04/05. From 806 in 04/05 to 5,044 (72% conviction rate) as were 62,973 men (77% conviction rate). It was higher in 15/16 (5,641 women and 69,675 men) and in 2018/19 it was 4,599 women and 55,480 women.

- (23) In 17/18, 16 men died at the hands of their partner or ex-partner compared to 80 women (certainly not two women per week)

England and Wales

	Apr '07 to Mar '08	Apr '08 to Mar '09	Apr '09 to Mar '10	Apr '10 to Mar '11	Apr '11 to Mar '12 ²	Apr '12 to Mar '13	Apr '13 to Mar '14	Apr '14 to Mar '15 ³	Apr '15 to Mar '16 ^{4,5}	Apr '16 to Mar '17 ⁵	Apr '17 to Mar '18 ⁵	Apr '18 to Mar '19 ⁶
	Number											
Male victims												
Victim acquainted with suspect												
Partner/ex-partner ⁷	25	23	11	15	9	13	16	11	16	13	9	16
Female victims												
Victim acquainted with suspect												
Partner/ex-partner ⁷	80	101	95	98	87	79	85	83	75	79	63	80

- (24) One in every five victims of forced marriage is a man (21%).
- (25) The average male victim calling the ManKind Initiative helpline is 42, is 5ft 9in tall and weighs 13st. The average female perpetrator is 40, is 5ft 4in tall and weighs 10st 7lb.
- (26) Currently, there are 37 organisations with 204 Spaces with only 40 of those places are dedicated for men. Many parts of the UK have no or limited places at all – for instance London has no spaces. There has been an increase as in February 2016, the figures were 18 organisations with c70 spaces, of which 24 were dedicated to male DV victims only. At a snap shot review on 26 March 2018, of the 102 places available at that time, there were only 10 spaces anywhere in the UK. Further research of four refuge providers in January 2018 showed men were travelling an average of 160 miles to access safe accommodation.

There are 269 refuge service providers in England providing 3,649 bed spaces across the country and sanctuary for many of the “12,000 women and their 12,000 children” who are forced to flee their homes each year due to domestic violence.

- (27) 13% of men (61% women) who are rough sleepers is due to partner abuse (85% of all rough sleepers are male). Due to the gender proportions of rough sleepers, this means as many men (in volume terms) sleep rough due to partner abuse as women.
- (28) On at least 120 occasions in 2010, a caller decided not to accept refuge or safe house accommodation because they were too far away and would mean having to completely uproot their lives, often having to leave their children and their job behind.

- (29) The NSPCC reported that 18% of boys and 25% of girls had been victims of physical violence at the hands of their girlfriend or boyfriend. 4% of boys had been victims of severe physical violence (11% of girls).
- (30) In 2013/14, on average high-risk victims live with domestic abuse for 2.6 years before getting help (men who call the ManKind Initiative helpline have suffered for an average of 6 years).
- (31) Men don't leave abusive relationships for various reasons – the top 10 reasons being:
- concern about the children (89%), marriage for life (81%)
 - love (71%)
 - the fear of never seeing their children again (68%),
 - a belief she will change (56%),
 - not enough money (53%),
 - nowhere to go (52%),
 - embarrassment (52%),
 - not wanting to take kids away from their mother (46%),
 - threats that she will kill herself (28%)
 - he fears she will kill him (24%).
- (32) Young women in a student survey are just as likely to be aggressive towards their partners as men, possibly even more.
- (33) In 2018/19, the police reported that 25% of all domestic abuse crimes were committed against a male victim.
- (34) In 2018, 174,733 men reported to English and Welsh police forces stating they were a victim of domestic abuse (73,000 in 2012) as did 514,081 women (311,000 in 2012). 25% of all victims who report to the police are male.
- (35) One in four victims of revenge porn are male.
- (36) Less than 10% (88%/97%) of male victims of partner abuse in Scotland are victims at the hands of a male perpetrator.

	Male Victim	Female Victim
Male Perpetrator	9%	97%
Female Perpetrator	88%	1%

- (37) In 2014/15, according to the ONS only 7% of male victims of partner abuse identified a male partner as the perpetrator of their abuse, and of those who provided an answer, 83% (45/54) reported a lone female perpetrator as against 13% (7/54) a lone male perpetrator.

Sex of perpetrator of partner abuse, by sex of victim, year ending March 2015 CSEW

England and Wales	Adults aged 16-59		
	Male	Female	All
	Percentage		
Male	7	59	43
Female	45	2	15
Both male and female	2	1	1
Don't know/can't remember	15	6	9
Don't wish to answer	32	32	32
Unweighted base - number of adults	283	834	1117

(38) There are c240 organisations providing services to male victims in March 2020. In 2012, the figure was c70.

(39) 59% of the men who call the ManKind Initiative helpline have never spoken to anyone before about the abuse they are suffering and 70% would not have called if the helpline was not anonymous. 66% have children in their household (2018/19)

(40) Callers to the ManKind Initiative helpline state they are suffering from these forms

Emotional	95%
Physical	68%
Financial	23%
Sexual	3%
Psychological	41%
Coercive control	13%

(41) According to police forces who provided information, the last figures available show that in 2017, only 3% of those who used the Domestic Abuse Disclosure Scheme ("Clare's Law") were men.

(42) The Office of National Statistics (ONS) reports that male victims (59%) of partner abuse are far more likely (female victims 40%) to perceive what happened to them as **not being** domestic abuse (2014/15).

(43) In a report called: MAKING LEGISLATION WORK MORE EFFECTIVELY FOR VICTIMS by IBB Solicitors, the following information was found: 34% of men stated they had experienced being in a coercive /controlling relationship.

When asked about bullying behaviours, men were just as likely to experience most of the issues asked about. There are a few exceptions where men were more likely to experience the issue than women.

- Monitored or controlled spending, 29% of men vs. 22% of women.

- Suspected partner of spying on you / your activity, 30% of men vs. 23% of women.
- Partner deprived you of or limited your food, 24% of men vs. 11% of women.
- Partner intentionally destroyed possessions or deleted important emails or texts, 27% of men vs. 20% of women.
- Partner hid / took away a phone / tablet / computer, experienced by 24% of men vs. 14% of women

Amongst those who said they had experienced bullying or abusive behaviour, nearly half of men (48%) said they did nothing about it, significantly higher than the figure for women (33%).

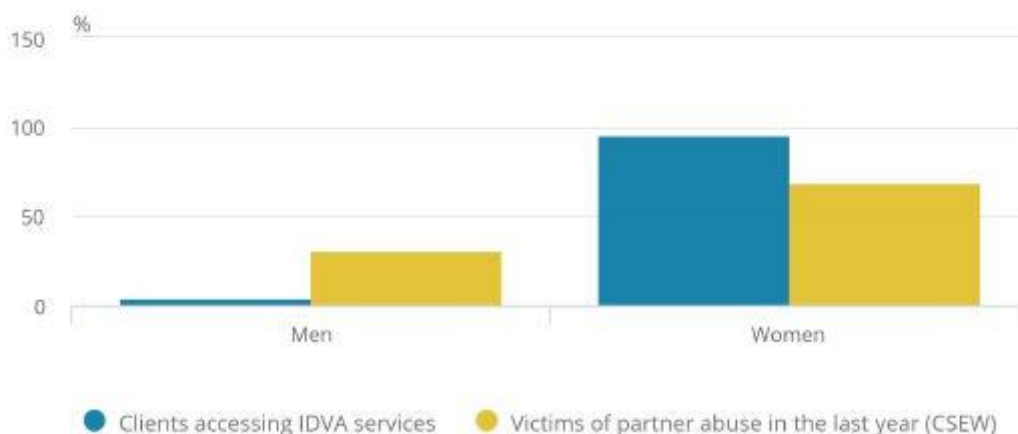
By contrast, women were much more likely to say they had ended the relationship (37%) compared with only 1 in 6 (16%) of men experiencing issues.

- (44) In terms of victims experiencing economic abuse 40% are men (60% women). One in seven men (15%) and one in five women experience financial abuse (21%) A larger proportion reported financial abuse post-separation: one in five men (21%) and one in four women (25%) within the full survey. This might be explained by the fact that financial settlements are often contested when relationships end. Some respondents reported that post-separation their partner kept taking them to court resulting in additional financial costs. Men were more likely to report this (61%) than women (39%).
- (45) Only 4% of victims of partner abuse accessing IDVA services in the year ending March 2018 were men. This is despite the fact that 34% of victims of partner abuse are men, showing more male victims are not accessing IDVA services than female victims.

Year ending March 2018, Insights IDVA data and Crime Survey for England and Wales

Figure 18: Sex of clients accessing Independent Domestic Violence Advisor (IDVA) services and sex of victims of partner abuse in the last year

Year ending March 2018, Insights IDVA data and Crime Survey for England and Wales



- (46) Only 5% of cases (4,336) discussed at MARACs (high risk victims) involve a male victim even though when it comes to victims of force there is broadly parity between male and female victims (see facts 7 and 17). The figures should therefore broadly reflect a ratio of 2 female (66%)/ 1 male (33%).

Cases discussed at multi-agency risk assessment conferences (MARACs), by police force area, region and sex of victim, year ending March 2018¹

England and Wales

Area Name	Number of cases discussed	Male victims		Female victims	
		Number	Percentage	Number	Percentage
ENGLAND AND WALES	88,461	4,336	5.0	82,024	95.0

- (47) According to the Victims Support In just over one-fifth of valid cases flagged as domestic abuse-related, the victim was male (21%). This contrasts to the gender breakdown of victims accessing specialist domestic abuse services such as IDVAs and MARACs, where a much smaller proportion of victims were male (4% and 5% respectively).

According to the ONS Report “This could indicate that male victims are less likely to seek out, be aware of or engage with specialist domestic abuse services, or are not signposted to specialist domestic abuse services. Male victims are also deemed less likely to be eligible for these types of support in terms of their risk level, and are therefore dealt with through multi-crime services. The majority of valid multi-crime service cases flagged as domestic abuse-related were referred by the police (95%,).

- (48) British Medical Journal research published in 2019 on the barriers to initial disclosure and help-seeking by male victims of DVA found five key themes. *fear of disclosure, challenge to masculinity, commitment to relationship, diminished confidence/despondency and the invisibility perception of services.*
- (49) Only one women was convicted of coercive and controlling behaviour in 2018 (305 men) which given the numbers of men who are victims of partner abuse shows that the police/CPS are not seeking convictions for this crime regarding female perpetrators.
- (50) Of those sentenced for breaching non-molestation orders, only 5% of women received an immediate custodial sentence (8/157) whilst 15% of men did (380/1590). The average sentence for a woman was 2.9 months and a man was 4.4 months. It would suggest women breaching these orders are treated more leniently than men.

In the family courts about 7% of those applying for non-molestation orders are male and 13% seeking occupation orders are male.

Table 19: Number of domestic violence orders in Family Courts in England & Wales by gender of applicant, year ending March 2012 to the year ending March 2019^{1,2}

England and Wales

	Apr '11 to Mar '12	Apr '12 to Mar '13	Apr '13 to Mar '14	Apr '14 to Mar '15	Apr '15 to Mar '16	Apr '16 to Mar '17	Apr '17 to Mar '18	Apr '18 to Mar '19
Number								
Non-molestation orders								
Male	1,004	1,061	1,302	1,463	1,548	1,530	1,827	2,002
Female	17,776	17,909	21,125	21,525	21,131	21,425	23,391	24,597
Unknown	817	676	817	905	950	1,132	1,157	1,269
Occupation orders								
Male	300	287	288	221	261	251	288	293
Female	2,710	2,373	2,395	2,253	2,027	1,964	1,960	1,986
Unknown	75	63	60	62	71	76	65	64

Source: Ministry of Justice

1. Totals in this table may not match other tables on non-molestation orders and occupation orders (and those available in the [Family Court Statistics Quarterly publication](#)). This is because some older domestic violence cases have more than one applicant.

2. Figures may differ to the figures published in previous releases. This is because data on domestic violence orders by gender of applicant are extracted from a live administrative database where data may be amended or received late.

50 Key Facts: Sources

The key ONS reports can be found on this page called Domestic abuse in England and Wales overview: November 2019: <https://bit.ly/3aj64fz>

These reports include:

- Domestic abuse prevalence and trends, England and Wales: year ending March 2019: Report - <https://bit.ly/38f7GWh> and Data - <https://bit.ly/3ajXVrm>
 - Domestic abuse victim characteristics, England and Wales: year ending March 2019: Report - <https://bit.ly/2VyvfXq> and Data - <https://bit.ly/3acxG5Y>
 - Partner abuse in detail, England and Wales: year ending March 2018: Report - <https://bit.ly/38epe4X> and Data - <https://bit.ly/38faSRL>
- (1) ONS domestic abuse: findings from the Crime Survey for England and Wales: year ending March 2019 (<https://bit.ly/3cXPfc9>) - Table 1a and 2a
 - (1) ONS domestic abuse: findings from the Crime Survey for England and Wales: year ending March 2019 (<https://bit.ly/3cXPfc9>) - Table 1a and 2a
 - (2) ONS domestic abuse: findings from the Crime Survey for England and Wales: year ending March 2019 (<https://bit.ly/3cXPfc9>) - Table 1a and 2a
 - (3) ONS domestic abuse: findings from the Crime Survey for England and Wales: year ending March 2019 (<https://bit.ly/3cXPfc9>) - Table 1a and 2a
 - (4) ONS domestic abuse: findings from the Crime Survey for England and Wales: year ending March 2019 (<https://bit.ly/3cXPfc9>) - Table 1b and 2b

- (5) ONS domestic abuse: findings from the Crime Survey for England and Wales: year ending March 2019 (<https://bit.ly/3cXPfc9>) - Table 1b and 2b and ONS Stalking: findings from the Crime Survey for England and Wales (year ending March 2019) <https://bit.ly/2TYNYtT> - Table 8
- (6) ONS domestic abuse: findings from the Crime Survey for England and Wales: year ending March 2019 (<https://bit.ly/3cXPfc9>) - Table 1b and 2b
- (7) ONS domestic abuse: findings from the Crime Survey for England and Wales: year ending March 2019 (<https://bit.ly/3cXPfc9>) - Table 1b and 2b)
- (8) ONS domestic abuse: findings from the Crime Survey for England and Wales: year ending March 2019 (<https://bit.ly/3cXPfc9>) - Table 6a
- (9) ONS domestic abuse: findings from the Crime Survey for England and Wales: year ending March 2019 (<https://bit.ly/3cXPfc9>) - Table 6a
- (10) ONS domestic abuse: findings from the Crime Survey for England and Wales: year ending March 2019 (<https://bit.ly/3cXPfc9>) - Table 6a
- (11) ONS domestic abuse: findings from the Crime Survey for England and Wales: year ending March 2019 (<https://bit.ly/3cXPfc9>) - Table 6a
- (12) ONS domestic abuse: findings from the Crime Survey for England and Wales: year ending March 2019 (<https://bit.ly/3cXPfc9>) - Table 6a
- (14) ONS domestic abuse: findings from the Crime Survey for England and Wales: year ending March 2019 (<https://bit.ly/3cXPfc9>) - Table 7a
- (15) ONS BCS Focus on Violent Crime and Sexual Offences 2015/16 <http://bit.ly/2kqolyb> Table 4.15 on <http://bit.ly/2l4azUK>
- (16) ONS domestic abuse: findings from the Crime Survey for England and Wales: year ending March 2018 <https://bit.ly/2FY8UYc> Table 13
- (17) ONS domestic abuse: findings from the Crime Survey for England and Wales: year ending March 2018 (<https://bit.ly/2FY8UYc>)- Table 14-15
- (18) ONS domestic abuse: findings from the Crime Survey for England and Wales: year ending March 2018 (<https://bit.ly/2FY8UYc>)- Table 14-15
- (19) ONS domestic abuse: findings from the Crime Survey for England and Wales: year ending March 2018 (<https://bit.ly/2FY8UYc>) - Table 14-15
- (20) ONS domestic abuse: findings from the Crime Survey for England and Wales: year ending March 2018 (<https://bit.ly/2FY8UYc>)- Table 16
- (21) ONS domestic abuse: findings from the Crime Survey for England and Wales: year ending March 2018 (<https://bit.ly/2FY8UYc>)- Table 24 and ONS BCS Focus on Violent Crime and Sexual Offences 2014/15 <http://bit.ly/1p8CGl0> Table 4.28 on Appendix Table: <http://bit.ly/1M1diC5>
- (22) Parliamentary questions (2004-2008) <http://bit.ly/1zE1ldH> , CPS FOI requests (2008-2015) and Parliamentary question (2016), CPS VAWG Report (page 39) in 2017/18 and Page 47 CPS VAWG Report (18-19) <https://bit.ly/2QjTgy5>
- (23) ONS Homicide in England and Wales (year ending March 2019) - <https://bit.ly/2VM3aw3> (table 10a)
- (24) Source: Forced Marriage Unit, Home Office: <https://bit.ly/2SMTGMY>
- (25) The ManKind Initiative helpline survey.
- (26) Male figures - The ManKind Initiative (refuge numbers as at March 2020) and female figures via Parliamentary Select Committee report 2017 <https://bit.ly/2lI3KBO>

- (27) Homelessness reasons: Crisis – A Nation Apart? (published December 2014) and Homeless percentages from Ministry of Housing, Communities and Local Government: <https://bit.ly/2FebdcP>
- (28) The ManKind Initiative helpline survey.
- (29) Partner exploitation and violence in teenage intimate relationships 2009: <https://www.nspcc.org.uk/globalassets/documents/research-reports/partner-exploitation-violence-teenage-intimate-relationships-report.pdf>
- (30) Safe Lives. 2015. Getting it right first time: Ending Domestic Violence. 24th February. Available at: <http://www.safelives.org.uk/sites/default/files/resources/Getting%20it%20right%20first%20time%20-%20complete%20report.pdf> and ManKind Initiative Helpline
- (31) Hines and Douglas in Graham – Kevan. Pp. 14
- (32) Bates, Elizabeth, A; Graham – Kevan, Dr Nicola; Archer, John. 2013. Testing Predictions From the Male Control Theory of Men’s Partner Violence. Aggressive Behaviour. Vol. 9999. Pp. 1 – 14.
- (33) ONS domestic abuse: findings from the Crime Survey for England and Wales: year ending March 2019 (<https://bit.ly/3cXPfc9>) - Table 15
- (34) FOI requests to 43 police forces conducted by the ManKind Initiative: <https://bit.ly/2vy9jBc>
- (35) <https://www.gov.uk/government/news/hundreds-of-victims-of-revenge-porn-seek-support-from-helpline>
- (36) Scottish Crime and Justice Survey 2017/18: Partner Abuse (Figure 9.11, page 131): <https://bit.ly/2x2LWjt>
- (37) ONS: Sex of perpetrator of partner abuse, by sex of victim (2014/15) - <https://bit.ly/3aavOvb>
- (38) The ManKind Initiative – Oak Book Directory
- (39) The ManKind Initiative helpline (2018/19)
- (40) The ManKind Initiative helpline (2018/19)
- (41) FOI requests to the ManKind Initiative – figures being revised for 2019
- (42) ONS BCS Focus on Violent Crime and Sexual Offences 2014/15 <http://bit.ly/1p8CGI0> Table 4.28 on Appendix Table: <http://bit.ly/1M1diC5>
- (43) MAKING LEGISLATION WORK MORE EFFECTIVELY FOR VICTIMS by IBB Solicitors: <https://www.ibblaw.co.uk/insights/publications/controlling-or-coercive-behaviour-making-legislation-work-more-effectively?view=microsite>
- (44) Report by Co-op and Refuge entitled Money Matters: <https://bit.ly/2Wib0xD>
- (45) SafeLives Insights data published Domestic abuse in England and Wales: year ending March 2018 - <https://bit.ly/2Rbq1Mk> (Appendix Tables - <https://bit.ly/2HEEKxW>) – figure 18 (page 51)
- (46) SafeLives Insights data published Domestic abuse in England and Wales: year ending March 2018 - <https://bit.ly/2Rbq1Mk> (Appendix Tables - <https://bit.ly/2HEEKxW>) – Table 69)
- (47) Victims Support and SafeLives Insights data published Domestic abuse in England and Wales: year ending March 2018 - <https://bit.ly/2Rbq1Mk> (Appendix Tables - <https://bit.ly/2HEEKxW>) – Tables 55, 56 and page 60)
- (48) Help-seeking by male victims of domestic violence and abuse (DVA): a systematic review and qualitative evidence synthesis: Alyson L Huntley, Lucy Potter, Emma Williamson, Alice Malpass, Eszter Szilassy, Gene Feder (British Medical Journal) - <https://bit.ly/3b5b1ZY>

- (49) ONS: Domestic abuse and the criminal justice system, England and Wales: November 2019 <https://bit.ly/2QolnMw> (Table 16).
- (50) ONS: Domestic abuse and the criminal justice system, England and Wales: November 2019 <https://bit.ly/2QolnMw> (Table 17) and ONS: Domestic abuse and the criminal justice system, England and Wales: November 2019 <https://bit.ly/2QolnMw> (Table 19).

Produced by Mark Brooks (March 2020)

© The ManKind Initiative – This is open source so please quote the ManKind Initiative 50 Key Facts about Male Victims of Domestic Abuse.